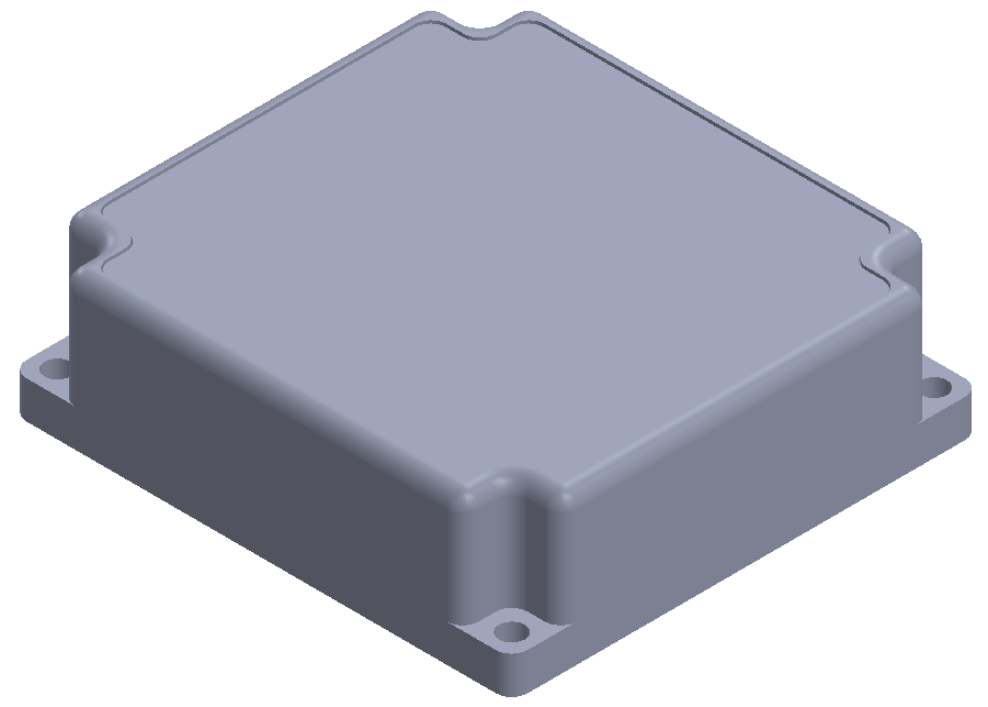
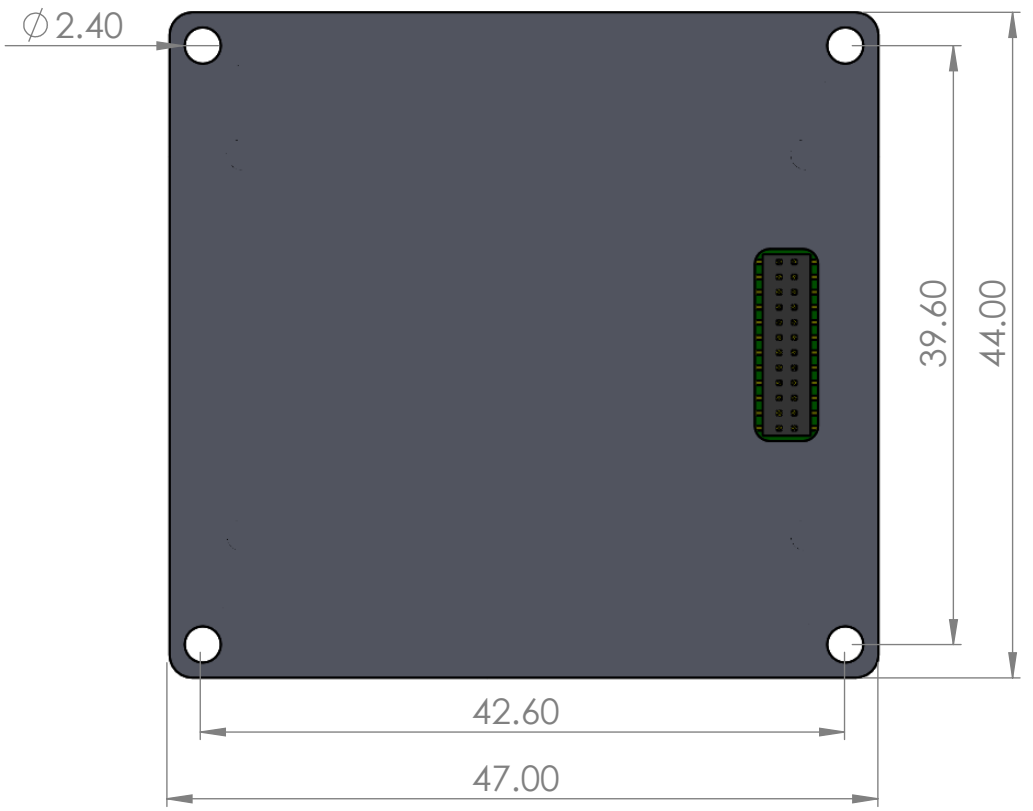


THE INFORMATION CONTAINED IN THIS DRAWING IS THE SOLE PROPERTY OF AERON SYSTEMS PVT. LTD. ANY REPRODUCTION IN PART OR WHOLE WITHOUT THE WRITTEN PERMISSION OF AERON SYSTEMS PVT. LTD. IS PROHIBITED.

CONFIDENTIAL



ISOMETRIC VIEW FOR REFERENCE

	DEBURR AND BREAK SHARP EDGES	STOCK SIZE: NA SURFACE COATING: ANODIZING	MATERIAL: AL 6061-T6 WEIGHT: < 50 gm SURFACE FINISH: NA
--	------------------------------	--	---

aeron
AERON SYSTEMS PVT. LTD.
ROW HOUSE NO 9-10,
SHROFF SOLENO,
NEAR BALEWADI STADIUM
MHALUNGE ROAD, MHALUNGE,
PUNE-45, MAHARASHTRA

REVISION HISTORY			
DATE	VERSION	DESCRIPTION	AUTHOR
19/05/2020	v1.0	FIRST DRAWING ISSUE	MRP

DEVIATION FOR NON-TOLERANCED DIMENSIONS (IS : 2102 MEDIUM GRADE) DIAMETER AND LENGTH UPTO & INCL.
6 ±0.1
6-30 ±0.2
30-120 ±0.3
120-315 ±0.5

AERON SYSTEMS	DESIGN'D BY	MADHAVI PATANKAR	SIGNATURE		TITLE:	PROD DIM
	DRAWN BY	MADHAVI PATANKAR			PROJECT NAME:	CSTR-IMU1640
	CHECKED BY	ABHIJEET MANDAVGANE			DWG NO:	
	APPRV'D BY	ABHIJEET BOKIL			SCALE 2:1	SHEET 1 OF 1
APPROVED FOR QUOTATION	UNLESS OTHERWISE SPECIFIED: DIMENSIONS ARE IN MILLIMETERS			REVISION : r1.0	A4	